



## 9 MILE PARK

Hamilton, NY

Public Meeting  
February 2022





## 9 MILE PARK

Hamilton, NY

The town of Hamilton has acquired  
the 7.34 acre parcel along  
Sangerfield River and Wickwire Rd





# First Public Meeting

October 2021

Over 30 people in attendance  
toured site and provided feedback



Photos courtesy of Mike Jaquays  
Mid York Weekly  
USA Today Network

- Kayak launch area needs improvement:
  - a. The ability to maneuver with a large car and trailer is limited.
  - b. Expand and create proper grading to make area accessible.
  - c. Possibly add a dock for ease of use.
  - d. It is currently difficult to see when pulling out from the site down by the river.
  - e. Site distance is poor and the steep grade amplifies the problem.
  - f. Consider adding a road within the site so the egress could happen near the top of the hill.
  - g. Fire trucks use this area for water access. This needs to be maintained.
  - h. The Amish community uses the site. Be sure to provide for Amish horse and buggies.
- The Native American history and archeology of the site needs to be respected.
- The site needs trails.
- Concern that the pavilion could become a party location if it is too secluded.
- People often make campfires near the river. Perhaps provide safe place for campfire/picnics. Maybe surround with rocks.
- Neighbor's concerns that park development doesn't restrict what they can do with their property.
- Please keep the site wild. The beauty of the land is its natural state. Do not overdevelop.
- Play features should be rustic in nature to be in keeping with the landscape.

## Issues / Concerns

### Public Feedback



### Accessibility:

Provide accessible kayak launch. (rails?)

Provide accessible parking for kayak launch.

Provide drop-off space for kayak launch.

Consider one-way driveway access from kayak launch area to upper parking area.

Provide parking in upper portion of site.

Locate amenities – restrooms/porto-a-pottys and pavilion near upper parking for accessibility

Locate a round mirror for egress site distance

Provide a hitching rail near river for Amish access.

Remove all “no trespass” signs

### Program Components:

Kayak launch and parking/drop-off

Picnic/Fire pit by water

Pavilion

Natural play along existing paths – see Wild center – use low impact play ideas.

Interpretive signs or activities for birds/plants

Education for native arrowheads

Supervised Archery range in upper field

Restrooms

Trash bins

Parking

## Ideas / Opportunities

Public Feedback

**Activities:** Family gatherings, reunions, picnics, education, play, kayak, walking loop, birdwatching

**Design Approach/Sensitivity to Natural Conditions:**

Use native species in any plantings

Replace thistles with blackberries along edge of woods

Plant fruit trees for natural snacks.

Utilize landscape for natural playground – low impact.

Use existing trails for walking trails.

Capitalize on glacier depressions in landscape.

Keep current quiet nature of water.

Prohibit all but smallest motor boats.

Keep it simple.

**Cultural/Historic**

Document indigenous heritage of the site and integrate it with the natural diversion (Native American stewardship of the land, history of canoes, etc.).

Collaborate with Colgate university ( upstate Institute, Native American Studies program, Archaeology faculty, sustainability office, sports and rec )

Collaborate with Oneida Indian nation.

Consider inclusion of the “Loomis Gang” story.

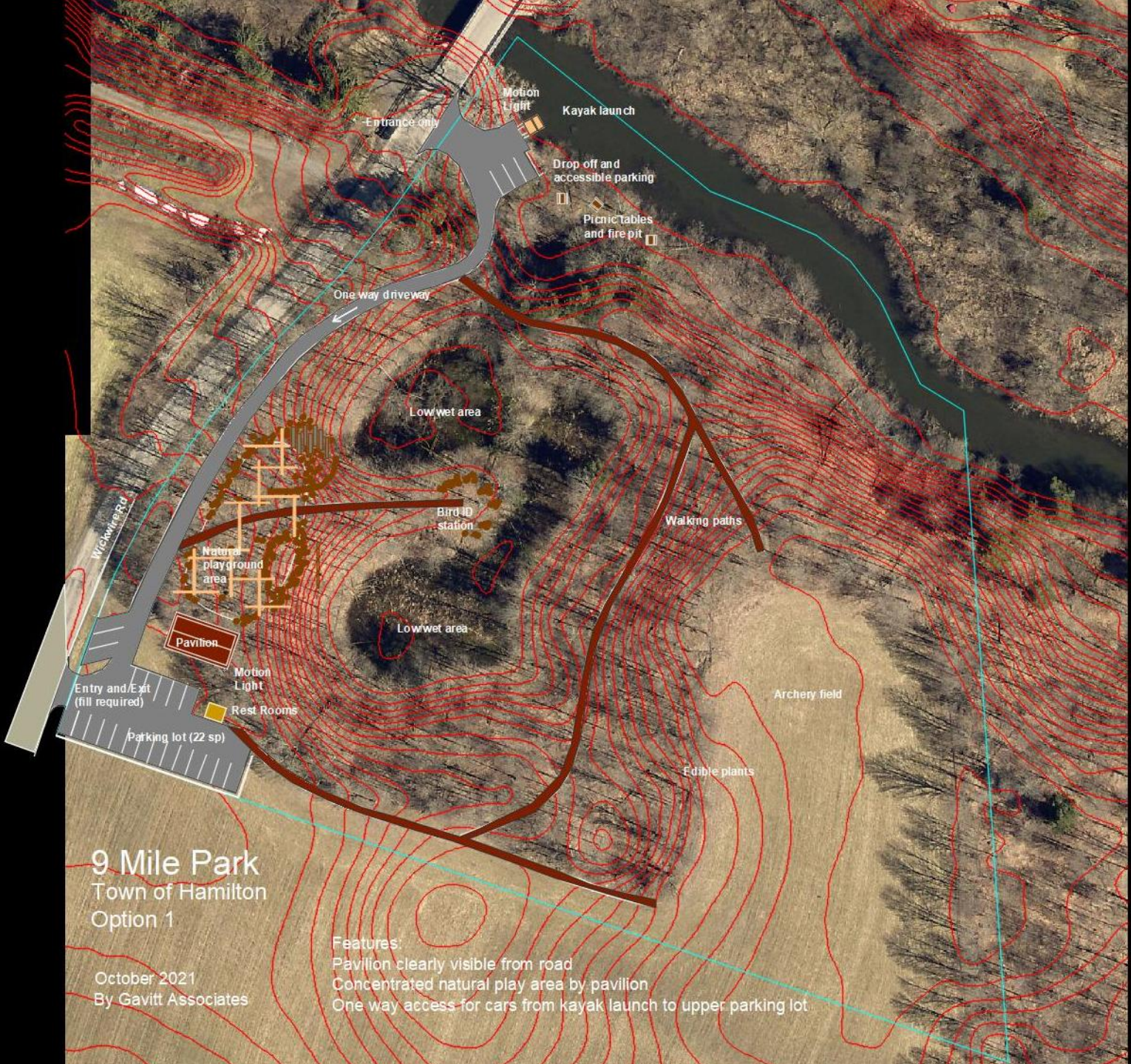
# Ideas / Opportunities

Public Feedback



# Conceptual Plan 1

- Entry only at Kayak area with 3 parking spaces
- One way traffic access from kayak launch to upper parking.
- Pavilion located at wooded edge.
- Natural play area located in sight of pavilion.
- Entry and Exit allowed at upper parking lot (22 spaces)



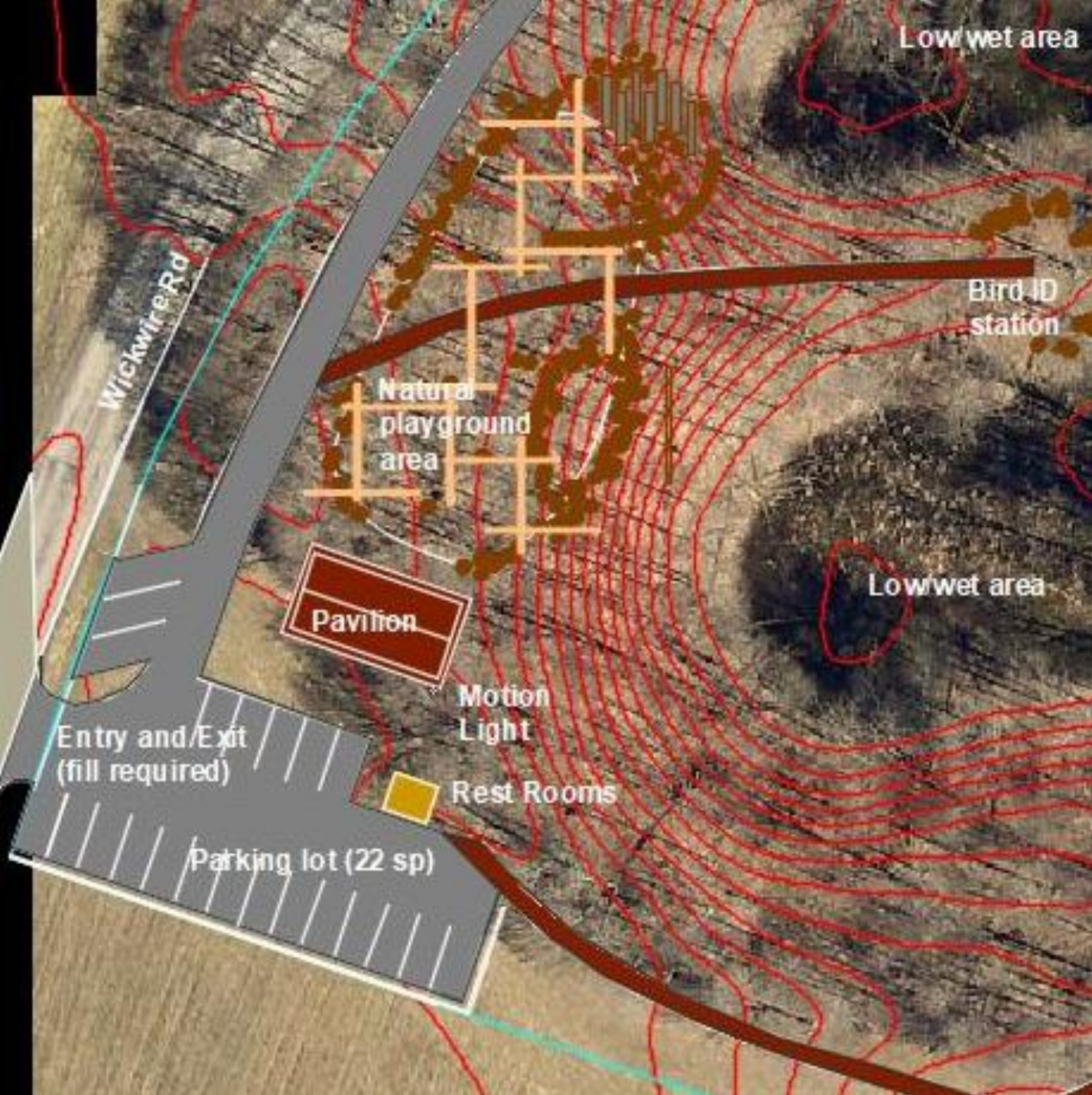




## Conceptual Plan 1

Kayak Launch area





## Conceptual Plan 1

Parking / Pavilion Area





9 Mile Park  
Town of Hamilton  
Option 2

October 2021  
By Gavitt Associates

Features:  
Pavilion overlooks internal landscape  
Natural play features located along internal trail system  
Kayak launch area is not connected internally to upper lot. Must use road.

## Conceptual Plan 2

- Entry and Exit at kayak area with 4 parking spaces
- No internal vehicular connection from kayak launch to upper parking.
- Pavilion located at ravine edge.
- Natural play area features dispersed along pathways around site.
- Entry and Exit allowed at upper parking lot (25 spaces)

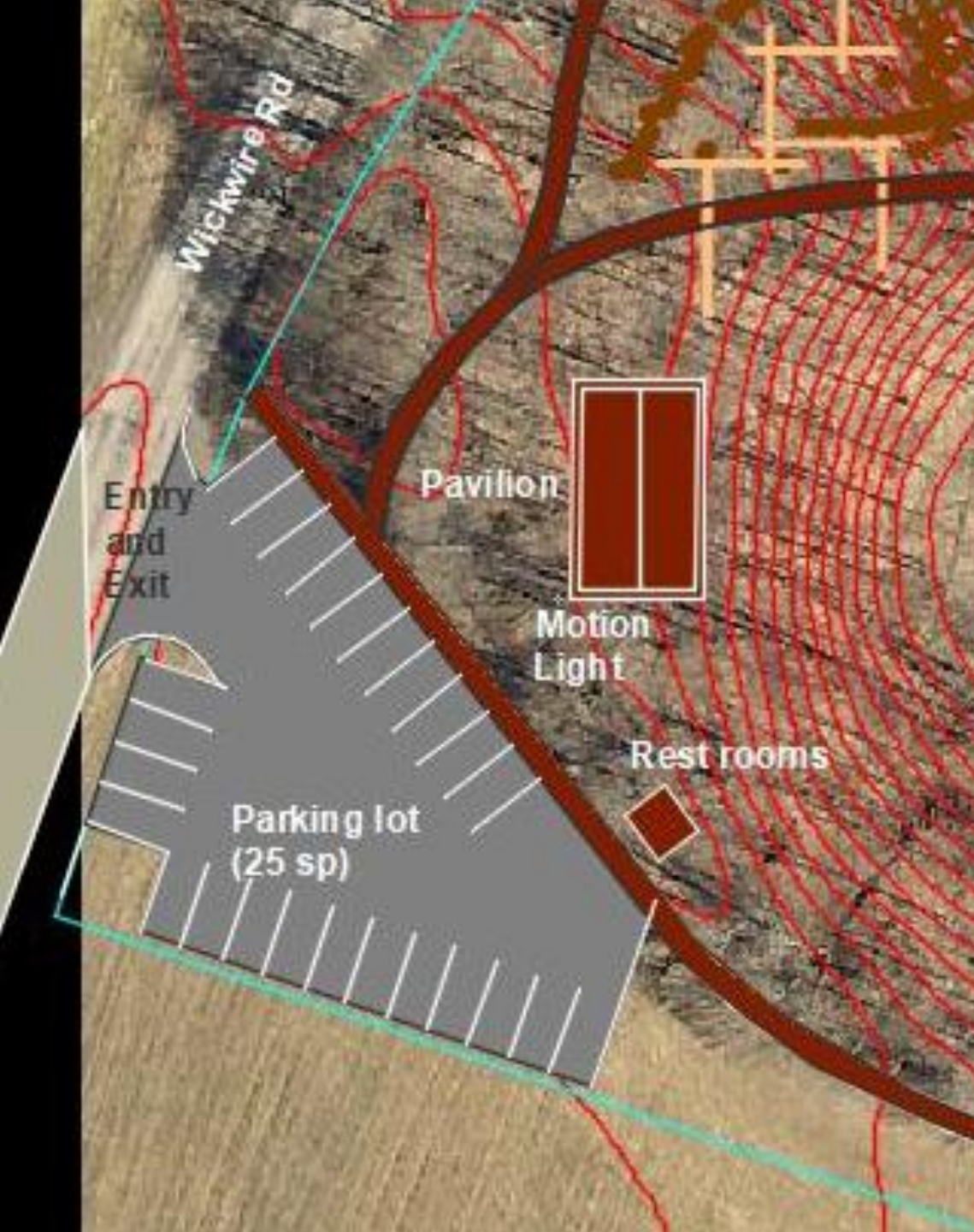




## Conceptual Plan 2

Kayak Launch area





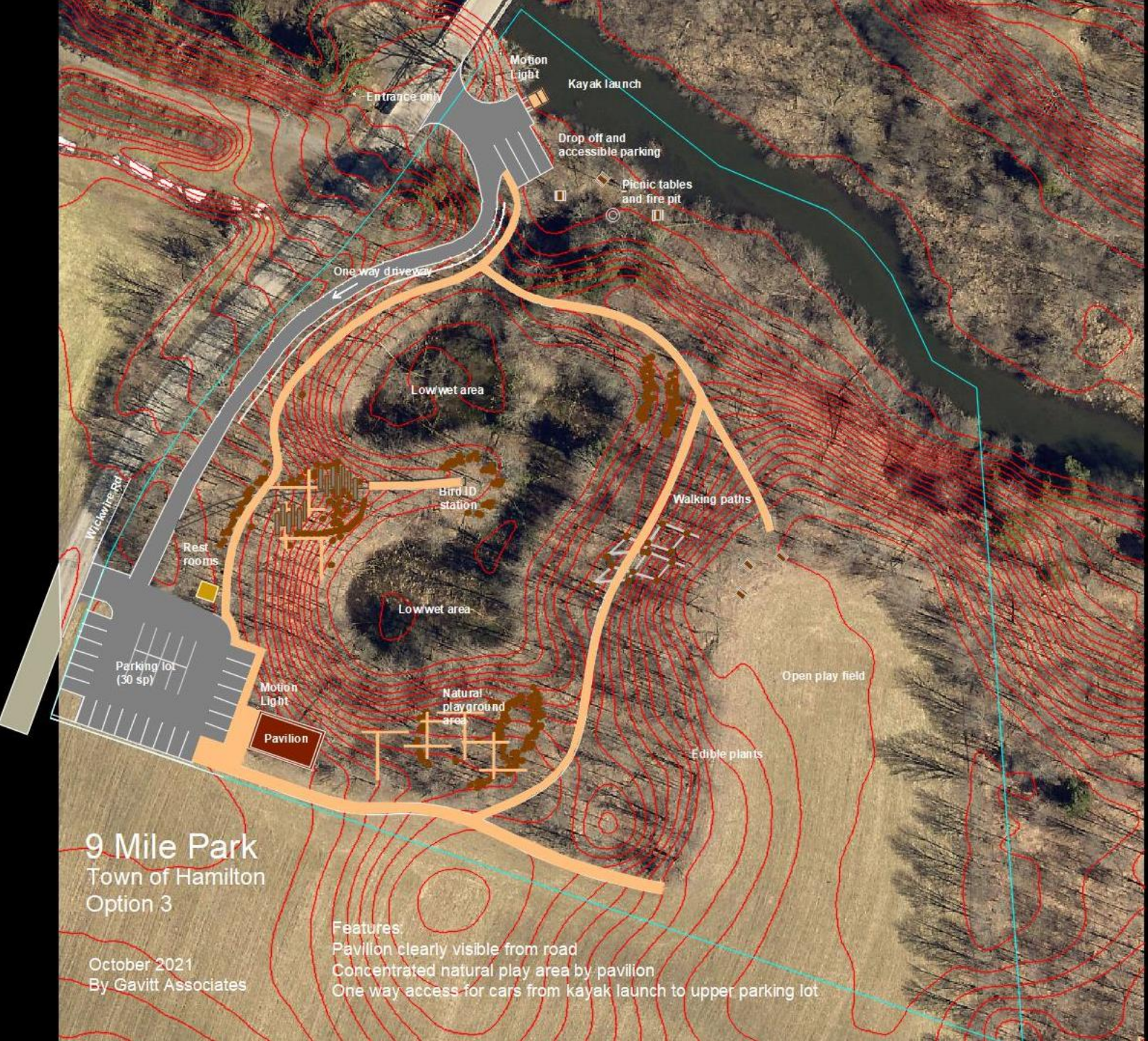
## Conceptual Plan 2

Parking / Pavilion Area



# Conceptual Plan 3

- Entry only at kayak area with 3 parking/trailer spaces
- One way traffic access from kayak launch to upper parking.
- Pavilion located at wooded edge with open view to south and into ravine.
- Natural play area features dispersed along path with concentration near pavilion.
- Entry and Exit allowed at upper parking lot (30 spaces)

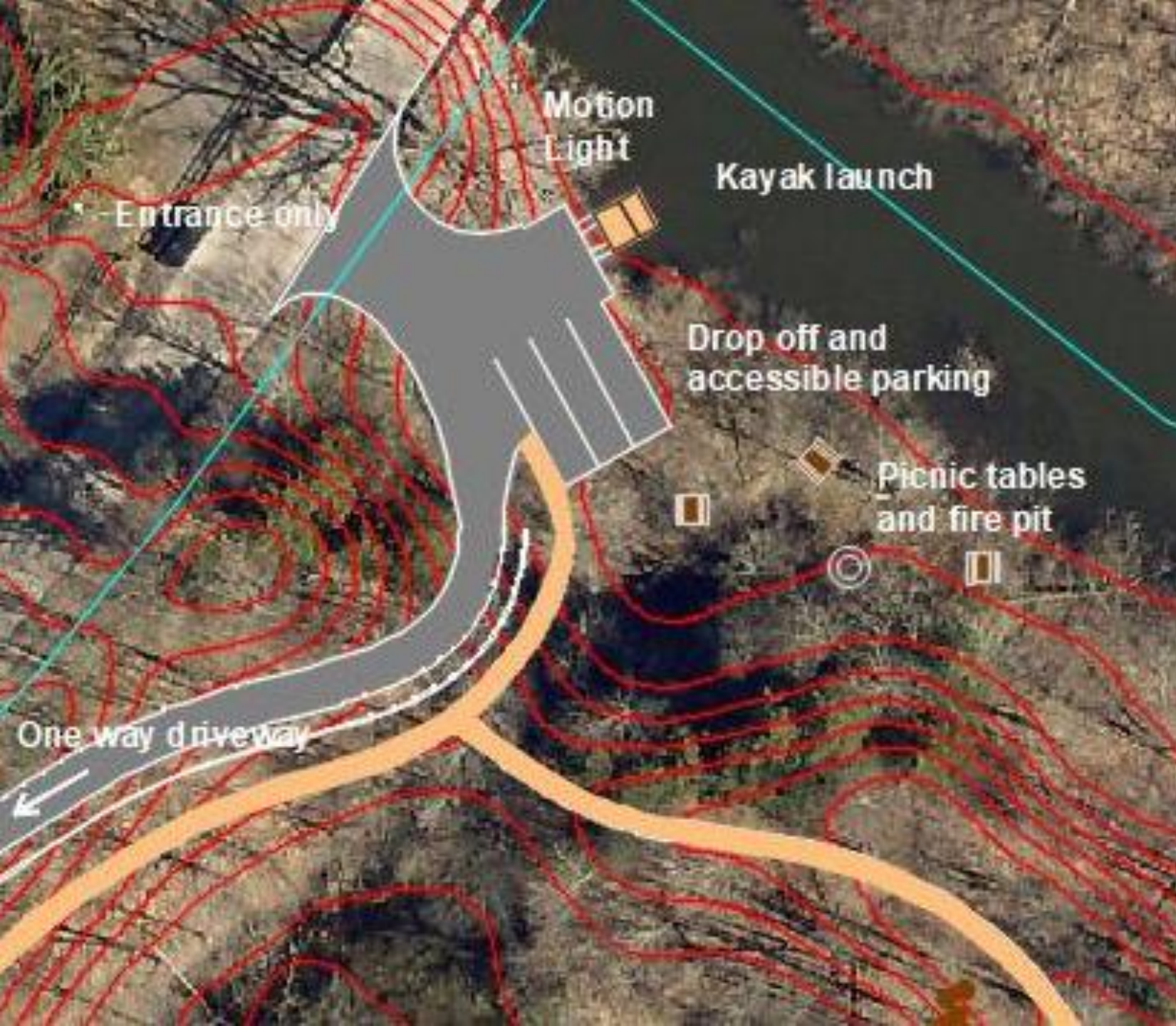


9 Mile Park  
Town of Hamilton  
Option 3

October 2021  
By Gavitt Associates

Features:  
Pavilion clearly visible from road  
Concentrated natural play area by pavilion  
One way access for cars from kayak launch to upper parking lot





## Conceptual Plan 3

Kayak Launch area





## Conceptual Plan 3

Parking / Pavilion Area





## Kayak Launch Options

- Will need DEC Permits for any land disturbance
- Issues include maintenance and accessibility



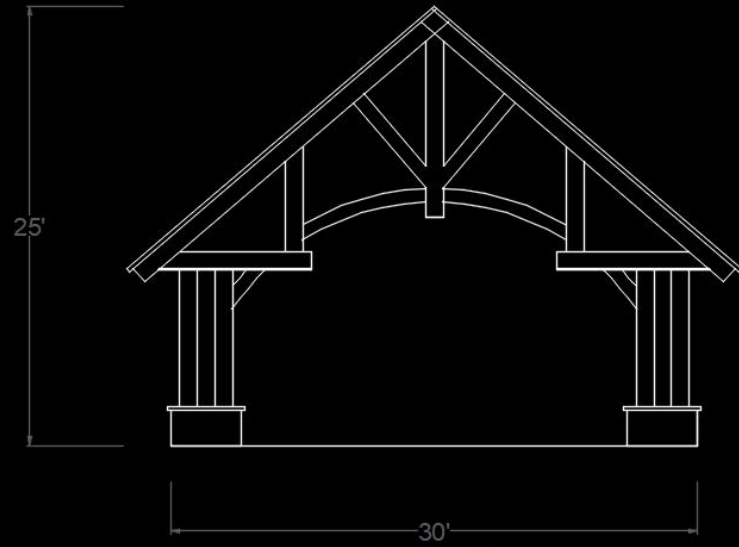




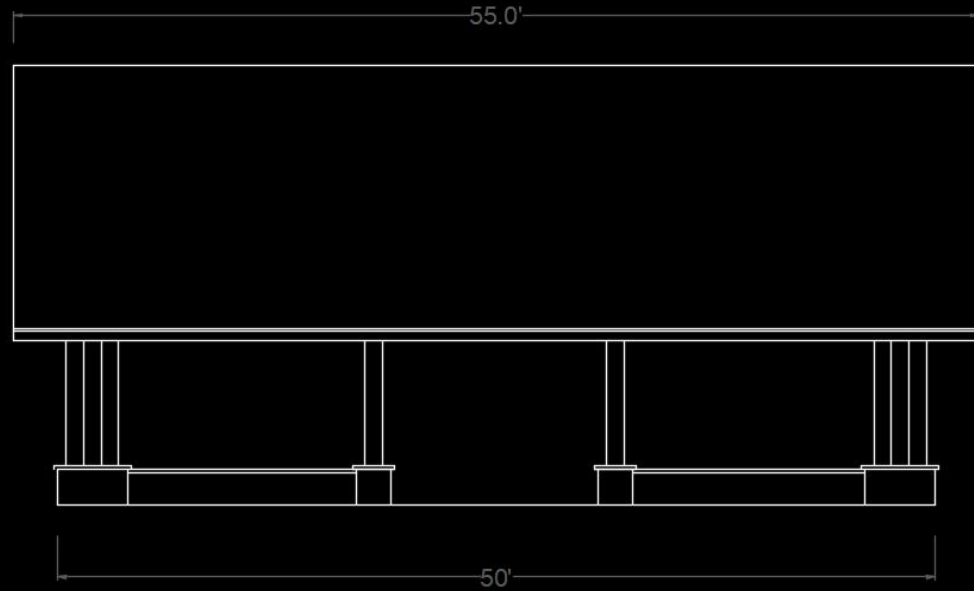
## Pavilion Character Ideas

- Rustic Posts/Beams
- Seat Walls
- Stone column bases





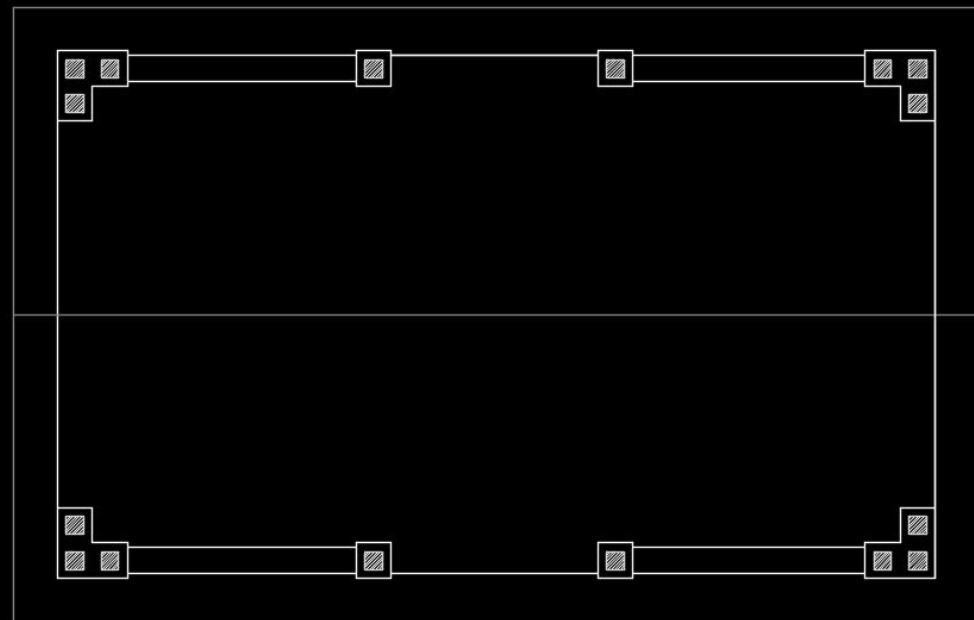
Front Elevation



Side Elevation

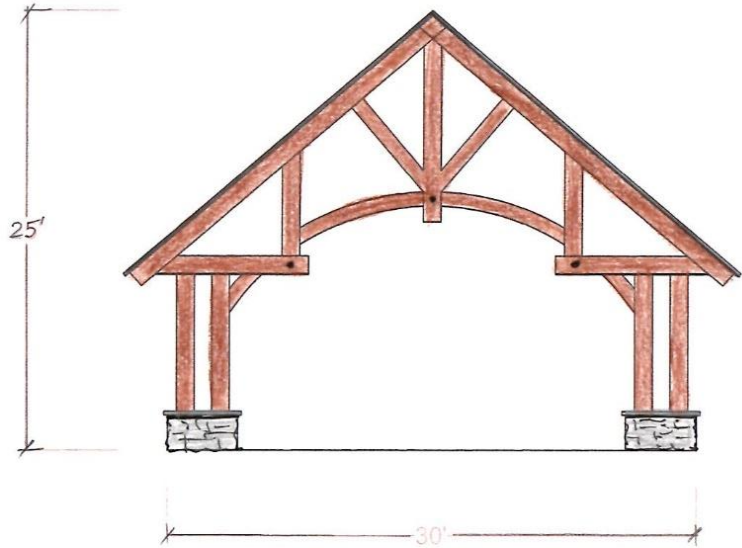
# Pavilion

Front Elevation

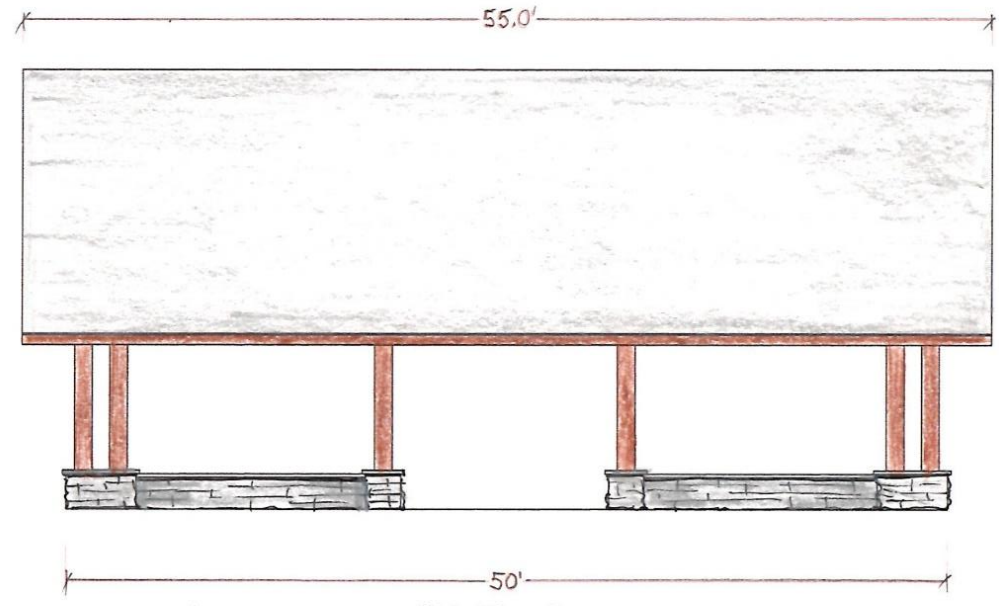


Plan





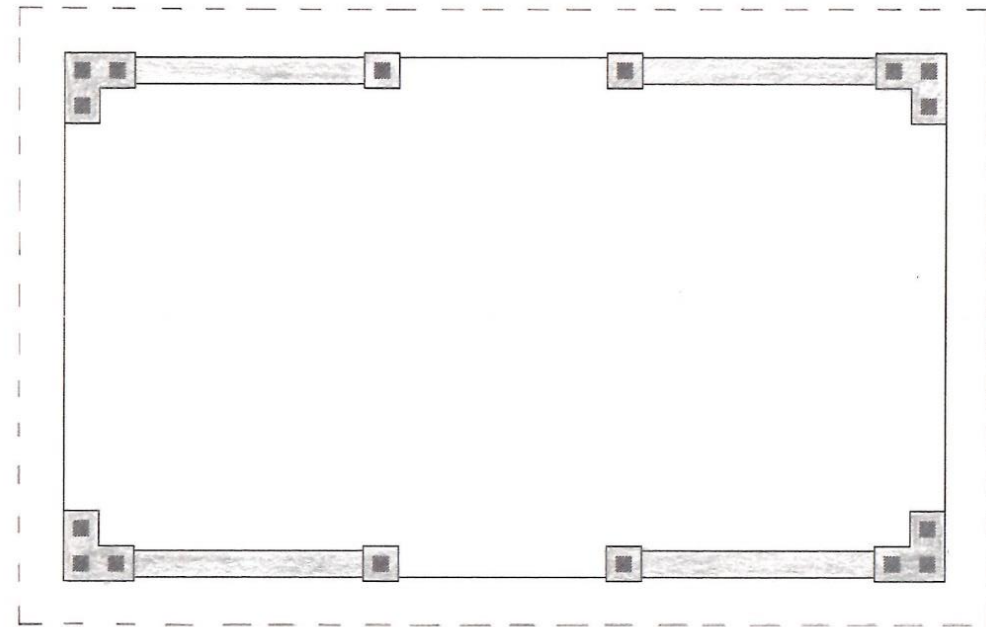
Front Elevation



Side Elevation

# Pavilion

Front Elevation



Plan

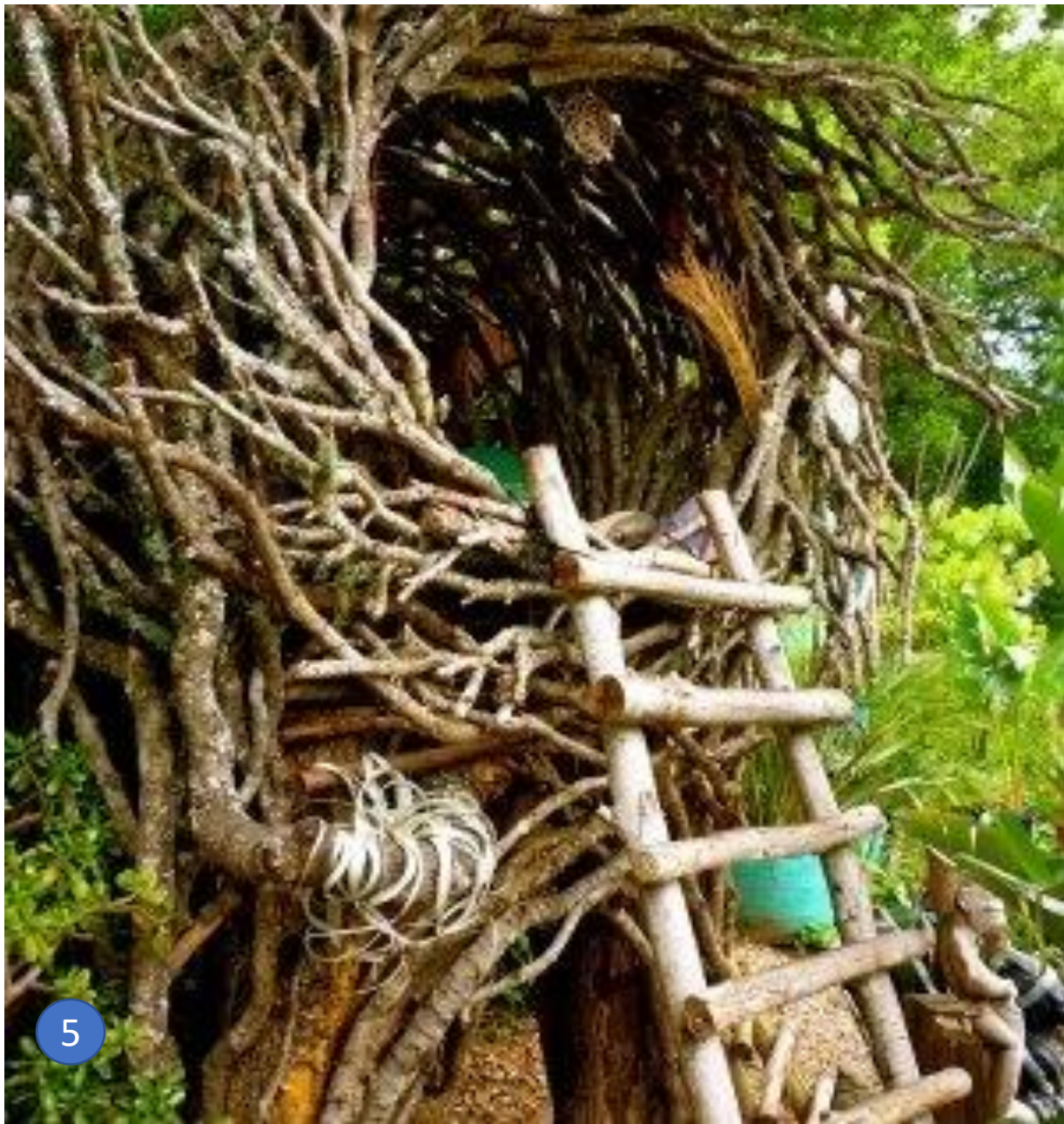




## Natural Play Features













## **PUBLIC FEEDBACK**

- 1. Which site plan option do you prefer and why?**
- 2. What preferences do you have regarding the pavilion structure and location.**
- 3. Comment on any vehicular circulation/parking preferences.**
- 4. Which play features do you prefer?**
- 5. Comment on the kayak launch area – issues/concerns/preferences.**
- 6. Please comment on any other items.**